

WELCOME

RIO PETROHUE HATCHERY



FRESH WATER

Male



Female



**Broodstocks
and eggs**



**Parr and
Smoltification**

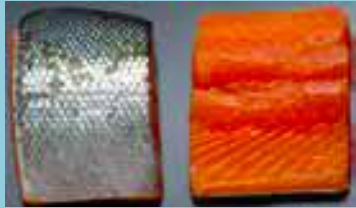


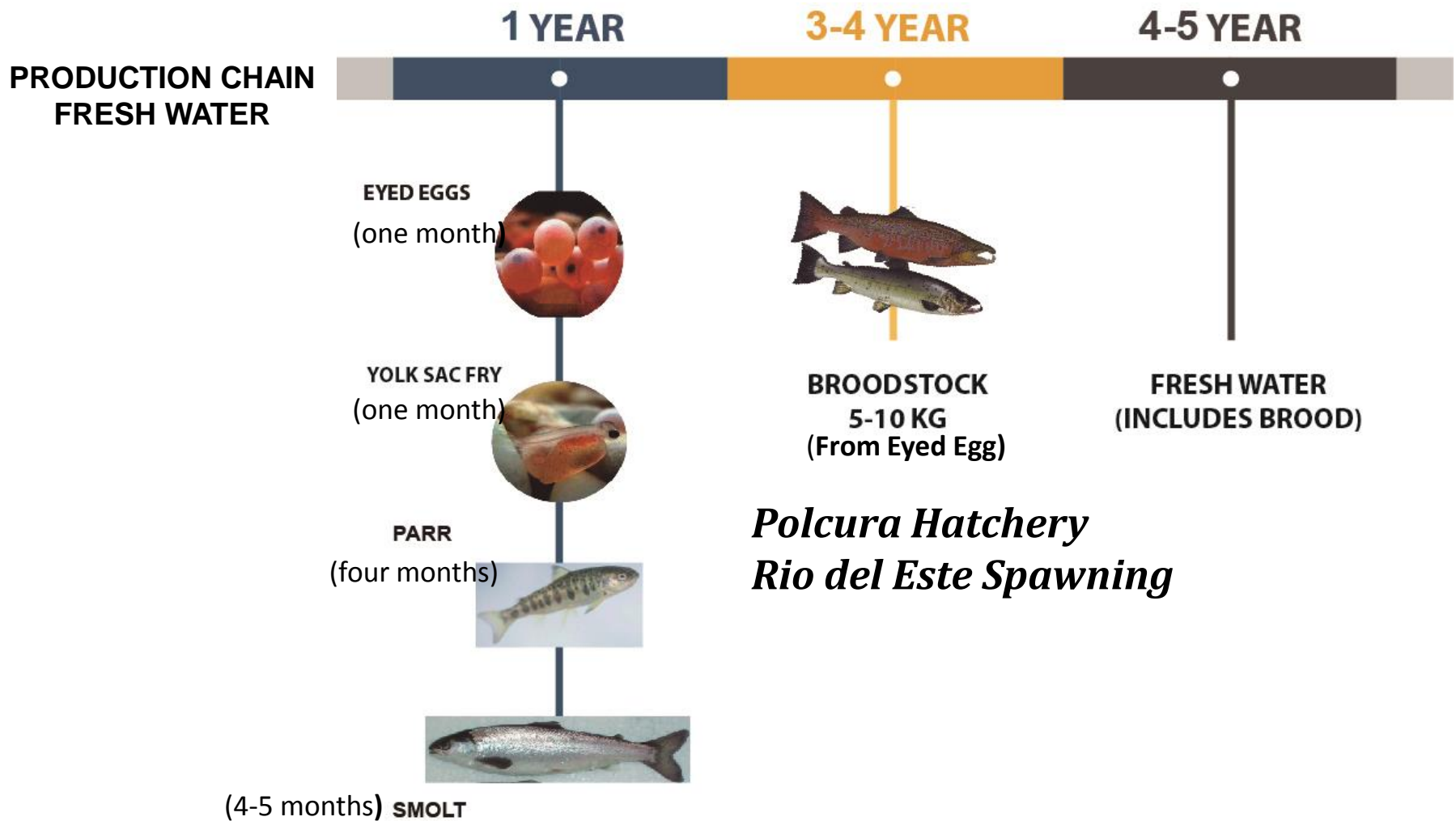
**Productive
Cycle**

**Ongrowing
in Sea**

SALT WATER

**Processing
Plant**





Polcura Hatchery
Rio del Este Spawning

Petrohue Hatchery

OUR FACILITIES

Hatcheries by Atlantic Salmon



Hatcheries by Trout or Coho Salmon



OUR PEOPLE IN THE FRESH WATER AREA

	TOTAL WORKERS
PETROHUE-UPS	56
POLCURA	15
RÍO DEL ESTE	17
PLAYA MAQUI	14
LOGÍSTICA TRANSPORTE PECES	2
GENÉTICA	2
	106



The main characteristic of *Petrohue* Hatchery

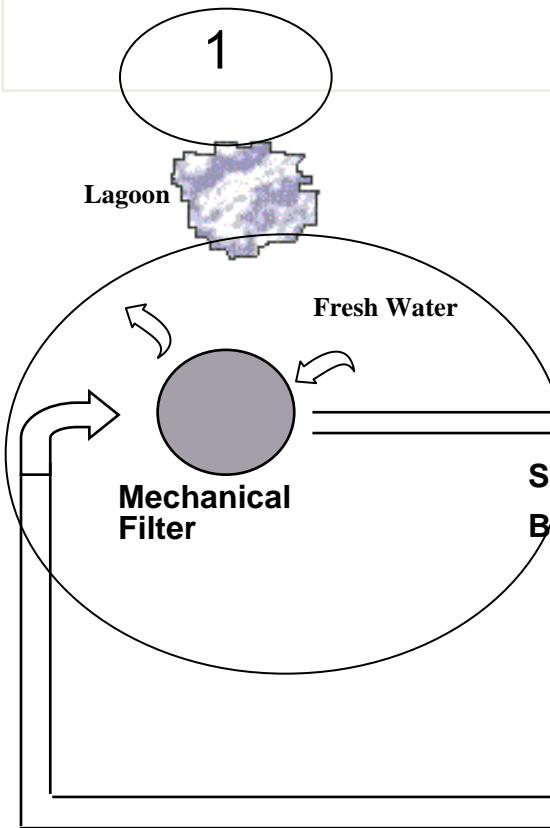
- ✓ 20 m eyed eggs Atlantic Salmon/ year.
- ✓ 14 m smolts of 100 gr/ year capacity.
- ✓ Total volume in culture ponds 15,425 m³.
- ✓ Water supply from 4 wells 120 meters deep with 250 lt/s(using only 60lt/s).
- ✓ Highly qualified Staff 17 years of experience in RAS.
- ✓ All solid waste disposal on land.
- ✓ Treatment of effluents with earthworms.
- ✓ Low residual water(no more than 60 lt/s)Compare Flow trough using 100 times less.



Recirculation Technology

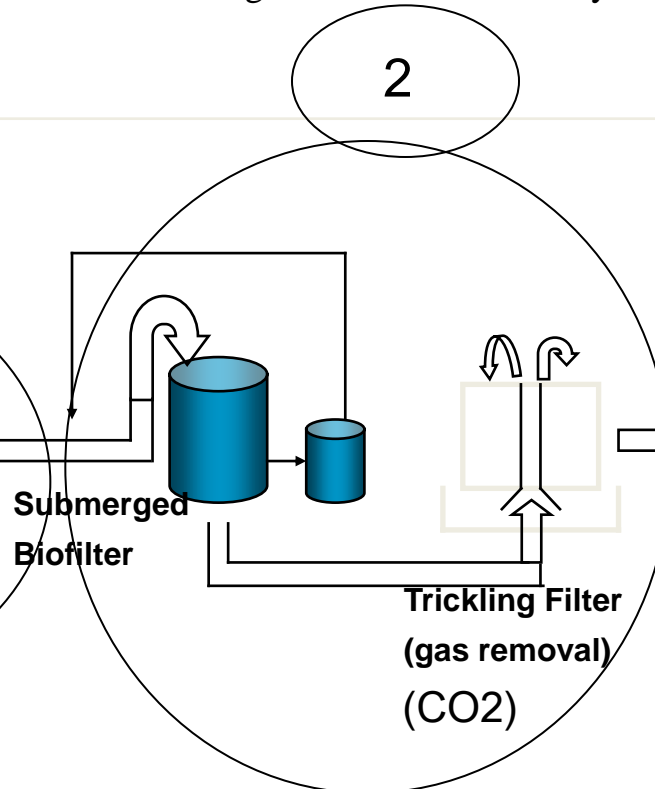
Mechanical Treatment

- Solid waste removal



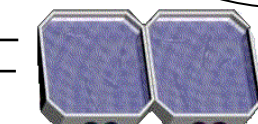
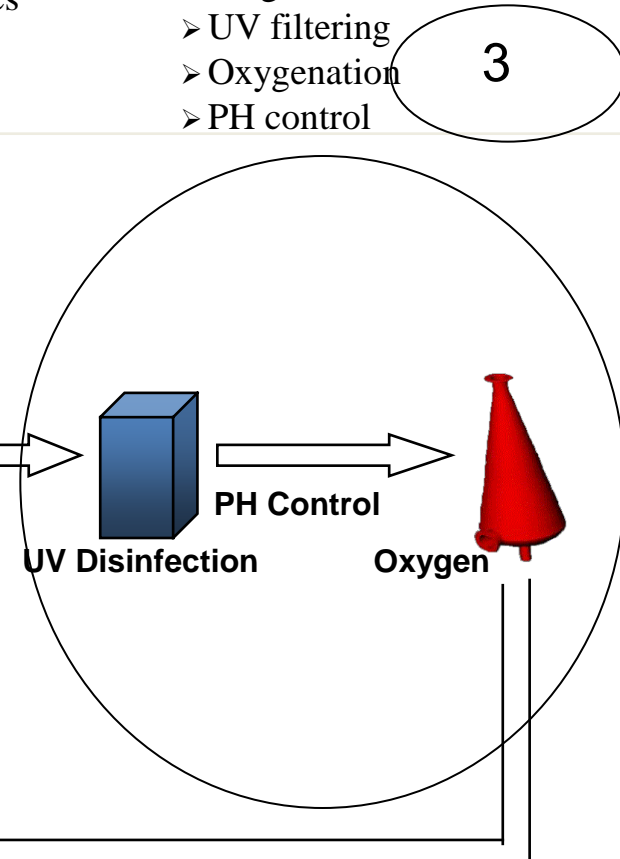
Biological Treatment

- Organic matter removal by bacteria



Other processes

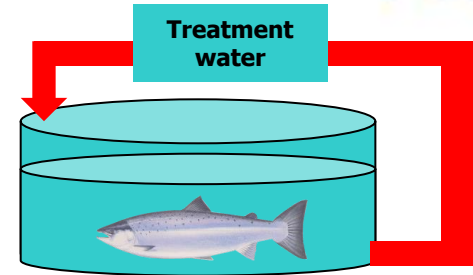
- De gas
- UV filtering
- Oxygenation
- PH control



Fish Tanks

RAS(Recirculation Aquaculture System)

How RAS System contributes to sustainability



- Control Environmental parameter(T° , O_2 , Salinity, Ph, others).
- Efficient use of water resources (100 times less compare others system).
- Low residual water (1% compare other system).
- Biological treatment effluent.
- No risk of escape(closed system).
- No interaction with wildlife and predators.
- Optimal health management (low losses)Disease Free.

How RAS System contributes to sustainability



PETROHUE

Fry Unit 2
9 M alevins 5 gr

66 Pounds

Water Treatment Zone

Ongrowing 2 rebuilding now

Water Treatment Zone

Ongrowing 1 (operating now)
15 M pre-smolt 40 gr.

Water Treatment Zone

Fry Unit 1
9 M alevins 5 gr

66 Pounds

Water Treatment Zone

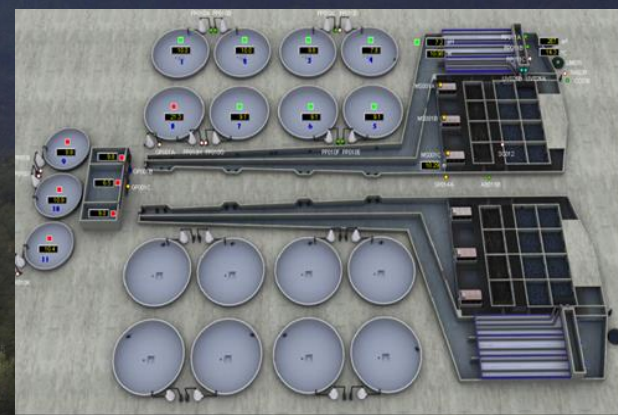
Hatchery
20 Million eyed eggs

Eyed egg certified



Smolts Units(5)

- 14 m Smolt/year at 100 gr.





THANK YOU FOR YOUR ATTENTION